

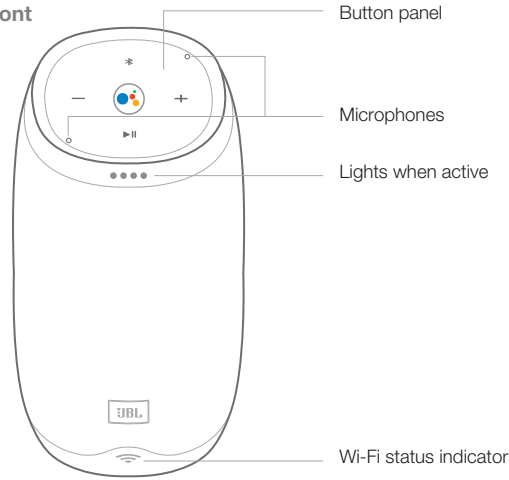


Link 10

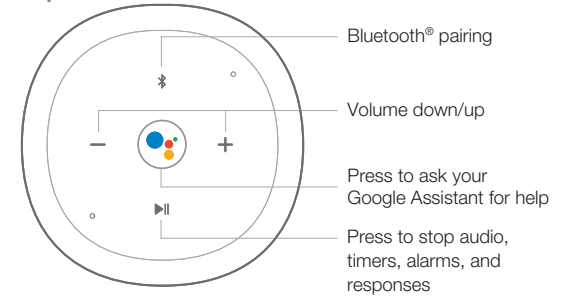


Product Tour

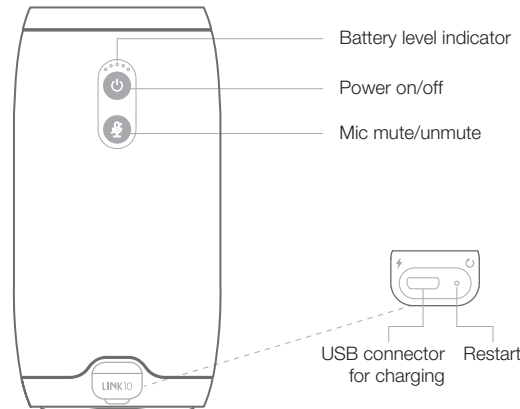
Front



Top



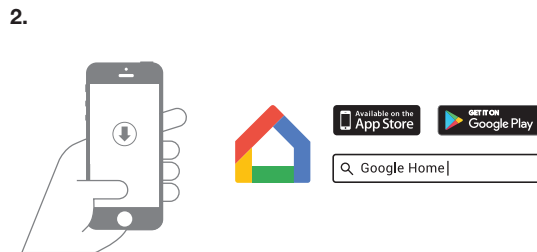
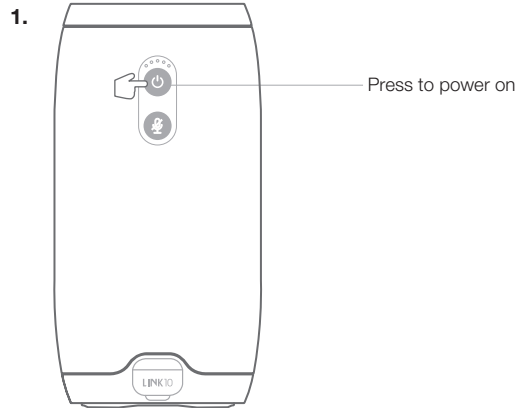
Back



Micro USB cable



Get Started



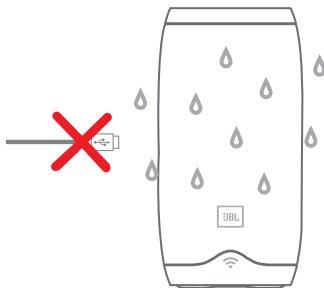
Download and run the **Google Home app** on a phone or tablet.
Set up your JBL Link 10 in the **Google Home app**.

IPX 7 Waterproof

JBL Link 10 is IPX7 waterproof.

IPX7 waterproof is defined as the speaker can be immersed in water up to 1m for up to 30 minutes.

IMPORTANT: To ensure that the JBL Link 10 is waterproof, please remove all cable connections and tightly close the cap; exposing the JBL Link 10 to liquids without doing so may result in permanent damage to the speaker. And do not expose JBL Link 10 to water while charging, as doing so may result in permanent damage to the speaker or power source.



Specification

- Transducer: 2 x 40mm
- Output power: 2 x 8W
- Frequency response: 65Hz-20kHz
- Signal-to-noise ratio: >80dB
- Battery type: Lithium-ion Polymer (3.7V, 4000mAh)
- Battery charge time: 4 hours @5V 1A
- Music play time: up to 5 hours (varies by volume level and content)
- Wireless network: 802.11b/g/n/ac (2.4/5GHz)
- Bluetooth version: 4.2
- Bluetooth transmitter frequency range: 2402 – 2480MHz
- Bluetooth transmitter power: <5dBm
- Bluetooth transmitter modulation: GFSK, $\pi/4$ DQPSK, 8DPSK
- 5G Wi-Fi transmitter frequency range: 5.150~5.350GHz, 5.470~5.725GHz, 5.725~5.825GHz

- 5G Wi-Fi transmitter power: <20dBm (EIRP)
- 5G Wi-Fi modulation: OFDM, BPSK, QPSK, 16QAM, 64QAM, 256QAM
- 5G Wi-Fi network compatibility: IEEE 802.11 n/ac
- 2.4G Wi-Fi transmitter frequency range: 2412 – 2472MHz (2.4GHz ISM Band, USA 11 Channels, Europe and others 13 Channels)
- 2.4G Wi-Fi transmitter power: <20dBm (EIRP)
- 2.4G Wi-Fi modulation: OFDM, DSSS, DBPSK, DQPSK, CCK, 16QAM, 64QAM
- 2.4G Wi-Fi network compatibility: IEEE 802.11b/g/n/ac
- Supported audio formats: HE-AAC, LC-AAC, MP3, Vorbis, WAV (LPCM), FLAC, Opus
- Dimensions (Dia x H): 86 x 169 mm
- Weight: 710g



Google Assistant
built-in



Chromecast
built-in



Bluetooth®



Google, Google Play, Chromecast, Chromecast built-in, Google Home and other related marks and logos are trademarks of Google Inc. Chromecast built-in may require subscription(s).

* Requires compatible device. Google Assistant requires an internet connection. Availability and performance of certain other features and services are service, device and network-dependent and may not be available in all areas; subscription(s) may be required, and additional terms, conditions and/or charges may apply.

The Bluetooth® word mark and logos are registered trademarks owned by Bluetooth SIG, Inc. and any use of such marks by HARMAN International Industries, Incorporated is under license. Other trademarks and trade names are those of their respective owners.

The Wi-Fi CERTIFIED Logo is a certification mark of the Wi-Fi Alliance.

This equipment complies with FCC/IC RSS-102 radiation exposure limits set forth for an uncontrolled environment. This equipment should be installed and operated with minimum distance 20cm between the radiator & your body.

This equipment is restricted in UK.